

the **OPTIMISTIC
PEZBIBLIOT**



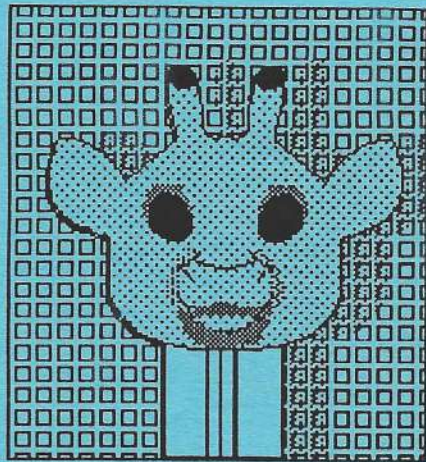
Special
Issue:
The
Ultimate
Guide
to
PEZ!

© M. Chung '90

PEZ Gallery
Collector Card

Giraffe

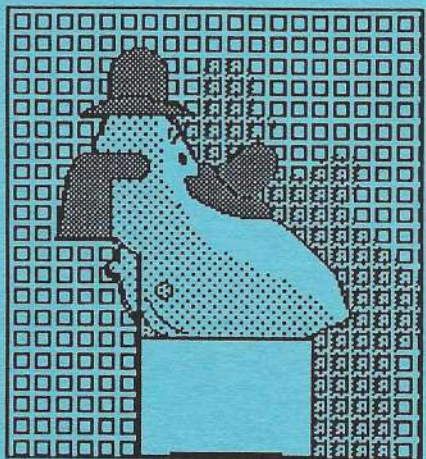
The Giraffe has an orange head, two black eyes (glued on) and black paint of the tips of her horns.



PEZ Gallery
Collector Card

Silly Clown A

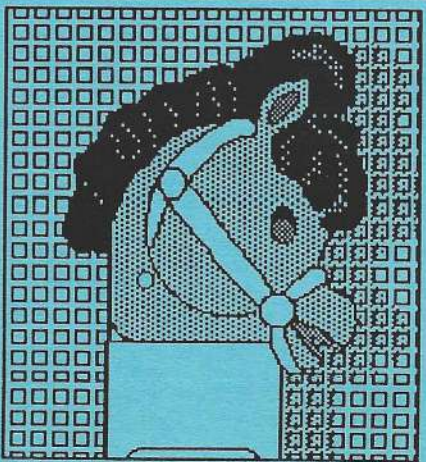
White head with extra pieces for the hat, hair and nose. Many color combinations were produced.



PEZ Gallery
Collector Card

Pony-Go-Round

The basic head is usually orange, but can also be tan or blue. Other pieces are the eyes, mane, and bridle.



the OPTIMISTIC PEZZIMIST

**The Optimistic
PEZZIMIST
Vol. 1, No. 3
May, 1990**

Publisher/editor
Mike Robertson

Contributing Artist
John McClung

Writers
Mike Robertson

Heroes
Steve Wozniak
Walt Disney
Penn and Teller
Michael Palin
Firesign Theater
Quincy Jones

The Optimistic PEZZIMIST is published on a wing and a prayer, especially when listing 227 PEZ dispensers. Gifts of money, homemade chocolate chip cookies and Plan 9 From Outer Space memorabilia are welcomed. Spam, form 1040, and bozos are not.

Table of Contents

The Letter Box.	2
Mike Sez	4
The Ultimate Guide to PEZ.	6
Hollywood PEZ.	16
PEZZANT Market.	30
Collector Cards	Inside front and back covers

About the Cover

John McClung, of Torrance, California, did the wonderful Peter PEZ cover for this ish. John is a graphic artist for Neutrogena, uses a Macintosh (the best computer in the world!) and contributed the centerspread for this issue. He was also to be the subject of a Profile, but the PEZ list has consumed everything in its path. His profile will appear next issue, along with more of his artwork. Thanks, John!



Mike,

Thanks for the **PEZZIMIST**— quite an eye-opening blast to see the number of dispensers and fanatics out there. My PEZ group is lean and tawdry in comparison.

Enclosed is my ad. Also enclosed is a small booklet put out by a friend of mine, Mark Pawson. It's about what I think is a purely European phenomenon— **Kinder Eggs**. Enclosed within chocolate eggs are intricate little plastic toys that you have to assemble. Thought you might be interested.

Thanks,
Rupert Wondolowski
Baltimore, MD

Rupert, the Kinder Eggs are the neatest thing I've seen in a long time! Any readers who go to Europe, pick up some of these! They are proof that quality can still go into tiny, inexpensive toys.

Dear Mike,

We are sure enjoying **The Optimistic PEZZIMIST**. What a great job you are doing.

The Gallery Collection Cards are a great idea. We have been running copies (so as not to destroy the magazine), coloring and laminating them for a card file. However, now the problem occurs: the last issue on the dark green cover stock will not copy well. Loved all the color coordination— cover, envelopes, post-it tabs and all, but it just won't copy. Would it be possible to get copies of the gallery cards from you on lighter paper? We sure would appreciate it.

Sincerely,
Shirley Garber
Conneaut, OH

I sense a great opportunity to make a deal here, Shirley. I will send a copy of the Gallery cards on white paper to anyone who writes a letter to the editor, places an ad, submits an article or otherwise contributes to the magazine. When you write, just say, "Please send me the Collector Cards from Issue #__". Only one page (six cards) will be sent per letter, ad, etc. And since you wrote this letter, Shirley, issue 2's cards are on the way!

Hi, Mike

Sorry I missed the deadline for issue #2 and the PEZ Poll. I was going to call at the last minute but I waited too long even for that. This brings up the question: How firm are your deadlines?

My late vote for character on a PEZ that isn't is Mad Magazine's Alfred E. Neuman.

The new Easter Bunny is nice. However, due to PEZ company's reluctance to do anything for collectors, I only bought one for my daughter instead of my usual ten. Does it not occur to PEZ Candy, Inc. how much impact we collectors have had on their sales, especially in recent years? I'm sorry, but I don't think I'll be giving out PEZ at Christmas, Halloween, Easter or any other special occasion as I have in the past as long as PEZ has this kind of negative, "don't care" attitude toward collectors.

I had a sweet'n'sour experience while looking for PEZ: the sweet part—I found two Psychedelic Eyes! The sour part— one was missing front of the eye and the other missing the whole eye. However, not to be discouraged by not having a complete head, I renamed it "Psychedelic Hand" and am tickled pink to have it.

Oh, yeah— I love how you color-coordinate everything!
Thanks!

Roland Austin
Stillwater, OK

I'm fairly easy to work with as far as deadlines are concerned. If your infor gets to me within a week of the deadline I set, I can usually still work it in. Any computer freaks out there? You can now send me E-mail. On CompuServe, send it to user #76635,1731; on GENie, I'm # XTX96976. You folks still using pencil and paper, it's Mike Robertson; P.O.Box 606; Dripping Springs, TX 7820.

I'm glad you noticed the color-coordination, Roland. I always want the magazine to look good.

We can only hope that PEZ will someday give some credit to the collectors who have caused this hobby to grow so much recently.

Auction News

This regular O.P. feature reports prices paid for PEZ items in recent auctions.

Toy-A-Day Auction (Feb. 28):

Creature from the
Black Lagoon— \$183

Richie Sternfeld's PEZ Auction #4 (March 13):

Wolfman— \$175
Peter Pan— \$116
Indian Chief— \$43
Football Player— \$43
Tinkerbell— \$118
Daffy Duck— \$4
Cool Cat— \$25
Octopus (red)— \$30
Paper Costume
A#10— \$36
Popeye (flesh face)—
\$30
Popeye— \$10
Zorro— \$5
Goofy— \$1
Goofy— \$7
Mickey Mouse— \$6
Puzzy Cat— \$11
Raven— \$5
Paper Costume A#4—
\$36
Casper Die-cut—
\$175
Spaceman— \$195
Astronaut— \$48
Santa Claus (full-
body style head)—
\$32
Foghorn Leghorn—
\$29



Just one day after I took the last issue to the printer, O.P. I received the first review of this magazine. **Factsheet Five** is a bi-monthly publication with a circulation of around six thousand. Editor/publisher Mike Gunderloy reviews an amazing array of zines, newsletters, books, tapes, journals and other publications, a couple of thousand each issue. Out of the hundreds and hundreds of publications, he chooses a half-dozen or so each issue and singles them out in his "Publisher's Choice" column. Well, guess who made his top choices this time! Here's what he had to say:

It's not too often that I choose a premiere issue for this column, but Mike's undeniable enthusiasm won me over. This is a specialized periodical for collectors of PEZ dispensers. Inside, there are results of recent auctions (some of these things are going for \$300 each), notes on variants and when and where they were issued, and ads from a whole bunch of collectors. In a nice touch, one of the advertisers in-

cludes color photos of the dispensers in his current auction. Looks like time to go through that box of junk in the attic again.

Several new subscribers have joined us as a result of this review. Thanks for the kind words, Mike.

Some new policy decisions: Starting with this issue, new subscriptions will begin with the most recently-published issue. Earlier issues may be ordered from the back issue dungeon (see info on page 30). Also, free sample issues can no longer be sent. If someone wants a sample issue, it will cost three dollars (that's money, not stamps!).

This issue is not what I thought it would be. I had other articles, more letters, more pictures. I had no idea how much room the Ultimate Guide to PEZ would take up. But it's a job that needed to be done and now that it is, I never want to write that list again!

Next issue should see us back to our more graphic-oriented mode. Let me again encourage you to be a part of this magazine. I love to get letters from you! And I get rather delirious when someone says they'd like to do an article or some artwork. After the Ultimate List, I'm not sure how much I've got left to say about PEZ. But how about you?

Mike

Auction News

Silly Clown A—	\$11
Bugs Bunny—	no bids
Speedy Gonzales—	\$13
Practical Pig—	\$1
Peter PEZ—	\$27
Moo Moo Cow A—	\$16
Chick-in-Egg (4th)—	\$10
Chick-in-Egg (1st)—	\$21
Chick-in-Egg (2nd)—	\$12
Big Top Elephant (flat hat)—	\$15
Big Top Elephant (domed hat)—	\$5
Tweety—	no bids
Bicentennial T-shirt—	\$75

Hake's Americana (April 4):

Group of Mickey, Donald, Pluto —	\$36
Group of Pinocchio A and Dopey—	\$296

Welcome to
all our new
Subscribers!
Let us
HEAR from
YOU!

Pezazz

Photos and Postcards Order Form

4" x6", Glossy, Full-Color Photographs
of all your favorite PEZ dispensers,
available now in your choice of
Post Card or Photo format.

- Satisfaction Guaranteed
- Allow 2 weeks for Delivery
- Send check or Money Order
payable to "Jill Russell" to:

Jill Russell
3103 Lincoln Ave.
Alameda, CA 94501

Prices

Photos— \$8.00 per set of 10
Post Cards— \$12.00 per set of 10
Postage & Handling— \$1.00 per set

Name _____

Address _____

City, State, ZIP _____

Total Sets of Photos ____ @ \$8.00 per set = _____

Total Sets of Post Cards ____ @ \$12.00 per set = _____

Postage & Handling @ \$1.00 per set = _____

TOTAL OF CHECK OR MONEY ORDER ENCLOSED = _____

Check off your selections

Here:

Photo	Post Card
<input type="checkbox"/>	<input type="checkbox"/>

Set # 1— Soft Head
Air Spirit • Diabolic • Scare Wolf • Spook • Vamp •
Zombie • Joker • Penguin • Batman • Wonder Woman

<input type="checkbox"/>	<input type="checkbox"/>
--------------------------	--------------------------

Set # 2— Warner Brothers
Bugs Bunny • Foghorn Leghorn • Henery Hawk •
Sylvester • Petunia Pig • Road Runner • Speedy
Gonzales • Tweety Bird • Wile E. Coyote • Merlin Mouse

<input type="checkbox"/>	<input type="checkbox"/>
--------------------------	--------------------------

Set #3— Oldies "A"
Bozo • Bullwinkle • Casper • Moo Moo Cow B • Popeye
(old) • Pear • Silly Clown A • Silly Clown B • Tinker Bell
• PEZ Flag Premium

<input type="checkbox"/>	<input type="checkbox"/>
--------------------------	--------------------------

Set #4— Disney "A"
Baloo • Dalmation • Donald Duck • Duck Child • Pinoc-
chio • Jiminy Cricket • Mickey 3 • Mowgli • King Louie
• Goofy

<input type="checkbox"/>	<input type="checkbox"/>
--------------------------	--------------------------

Set # 5— Disney "B"
Captain Hook • Dumbo • Li'l Bad Wolf • Peter Pan •
Dopey • Zorro • Snow White • Tinker Bell • Mary
Poppins • Practical Pig

<input type="checkbox"/>	<input type="checkbox"/>
--------------------------	--------------------------

Set # 6— Oldies "B"
Baseball Glove • Big Clicker • Brutus • Green Hornet •
Olive Oyl • Witch C • Psychedelic Eye • Psychedelic
Flower • Full Figure Santa • Full Figure Robot

<input type="checkbox"/>	<input type="checkbox"/>
--------------------------	--------------------------

Set # 7— Super Heroes/Movie Monsters
Batman • Batman with Cape • Captain America • Thor •
Creature from the Black Lagoon • Frankenstein •
Wolfman • Incredible Hulk • Spiderman • Wonder
Woman

<input type="checkbox"/>	<input type="checkbox"/>
--------------------------	--------------------------

Set # 8— Bicentennial
Betsy Ross • Captain • Daniel Boone • Indian Chief •
Indian Squaw • Pilgrim • Uncle Sam • Wounded Soldier
• Indian Brave • Cowboy

the
ULTIMATE
guide to
PEZZ

The article that
consumed space,
time and an
editor's sanity

This guide exists because of many requests for a complete listing of PEZ dispensers. Fairly complete lists had been published before, but they were noticeably lacking in providing descriptions and no published list was totally complete. Chances are that this one isn't complete, either. But it does represent the largest listing of PEZ ever compiled.

Traditionalists will take issue with some of the decisions I made in this article. I have changed the name of some dispensers! I have eliminated several categories recognized by the PEZ company and collectors alike. Why? To make it easier for new collectors to know what they have and what they need.

An example: In most PEZ lists, including the one the company sends out, the "Bicentennial" category includes an Indian Chief and an Indian Squaw. But the Indian Brave is found in the "Miscellaneous" category. That seems most illogical, Captain Kirk.

Another example: I got a call from a collector who was very surprised to learn that "King Louie" was an ape. He had thought that a king must have a crown and was under the impression that "Roar the Lion" must be the mysterious king. Which brings up another point. I have abandoned names that are not copyrighted characters. There's no reason "Mama Giraffe" shouldn't just be called "Giraffe" or that "Pony-Go-Round" shouldn't be called just "Pony". I do make note in each description when I have changed the name.

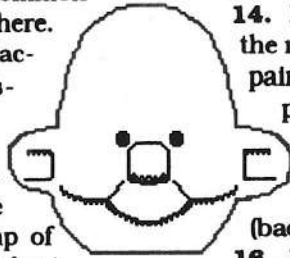
I have not dealt much with color variations in this list, due to size considerations and the fact that Hot Shots and Collector Gallery Cards usually mention such things. I have noted some dispensers that only come in one color if I thought it noteworthy.

A pull-out checklist is included with this issue. Remember to make a photocopy before you begin listing what you have or need.

Please write with any corrections, additions or new information you might have for this list.

PEZ Pals

PEZ Pals all share a common head, the one pictured here. Different hats, hair, and accessories have transformed this head into many characters.



1. **Boy**— One of the simplest Pals, this one merely features a clump of hair in a sort of Ted Koppel cut, usually brown, but sometimes blond.

2. **Boy with Cap**— Same as above, but with a baseball cap.

3. **Bride**— Same hairstyle as the nurse, but with a lace doily on top of it. Base is also white.

4. **Doctor**— Five extra pieces on head: black stethoscope, white moustache, white fringe of hair, white head band with silver reflector.

5. **Engineer**— Has tall, blue engineer hat.

6. **Fireman**— Should have short black moustache and red helmet with silver/grey badge on it.

7. **Girl**— Has blonde, pigtail wig with painted-on bows.

8. **Groom**— The Groom has a black top hat with white band and a white bow tie. The body is black.

9. **Judge**— See Unverified Dispensers below.

10. **Knight**— Three extra pieces: Silver helmet, attached visor and a feathery plume on top.

11. **Maharajah**— Has a green turban with a red jewel on the front.

12. **Mexican Boy**— Should have yellow sombrero, two gold-coin earrings and a bizarre-looking goatee/moustache. However, some Mexican Boys were sold without the moustache.

13. **Nurse**— Two extra parts: a

bouffant hairdo in one of several colors, and a white nurse's cap with painted red cross.

14. **Pirate**— One extra piece, the red scarf. A portion of it is painted black to form an eye patch over his right eye.

15. **Policeman**— Has a dark blue visor cap which bears a silver badge (badge #100).

16. **Ringmaster**— Has a long black handlebar moustache, a white hat with colored band (band is a separate piece) and a white bow tie. Frequently found missing one of these pieces.

17. **Sailor**— Has a blue, billed cap which is flat on top, and a white beard (no moustache).

18. **Sheik**— Two extra pieces: a white or off-white burnoose with a red or black band around the temples.

19. **Sheriff**— Has brown, cowboy-style hat, which should have a silver star on the front (Star is a separate piece). Oddly enough, the star is a six-pointed Star of David!

20. **Stand By Me**— When Rob Reiner's movie, *Stand By Me*, was released on videocassette, a promotion was done, linked to the mention of PEZ by one of the movie's characters. The PEZ Boy was packaged with a miniature of the movie poster. There is nothing special about the dispenser itself! Unless you have the special packaging for the video promotion, there's no way to tell if you have the real *Stand By Me* PEZ or the ultra-common Boy.

21. **Alpine**— A rare dispenser, this one was the official PEZ dispenser of the 1972 Winter Olympics in Munich. He wears a green derby which has a yellow feather in the back and he has a moustache like the Fireman.

Humans

These dispensers all have a basic "realistic" human head. There's a basic male head and a basic female head. Sometimes small changes are made to the mold; for example, the Indian chief has a more prominent nose than the other human-head dispensers.

22. Astronaut 1— Smaller human head like the "Cocoa Marsh", but with an opaque helmet and clear faceplate. A couple of variations are known, one with a white helmet and one with a metallic silver helmet.

23. Astronaut 2— Basic human head plus a white or aqua space helmet with a clear yellow faceplate.

24. Betsy Ross— A "Bicentennial" dispenser, she has two extra elements: a white kerchief cap and black hair. The hair looks like two pieces, but it goes all the way over the top of her head.

25. Captain— Another "Bicentennial" character, this Revolutionary War soldier has blond hair and the familiar tri-corner hat. The hat bears a small, round sticker which looks like a bullseye.

26. Cocoa Marsh— A smaller human head, this space guy has a clear helmet with a small knob over each temple and a taller knob sticking out the top back. The body of the dispenser should have the words "Cocoa Marsh" on one side where "PEZ" normally appears. Cocoa Marsh was a chocolate syrup product.

27. Daniel Boone— Has the same blond hair as the Captain, but also has a fairly goofy coonskin cap. The tail of the cap is sometimes found painted at the very end. (From the Bicentennial collection)

28. Football Player— Take the basic male head. Add a football helmet. On the helmet should be either

a stripe of colored plastic tape, or an actual piece of molded plastic to form a stripe. To be complete, the helmet should also have two other separate pieces— the face-guard and the chin strap. The body of the dispenser is also different from most. On one side, where it would normally say PEZ, is a long triangle-shaped space. Here you could stick a pennant for the team of your choice!

Green Hornet— See under "Licensed Characters"

29. Indian Brave— Small male head with painted black hair (hair is not a separate piece). Other piece is a white head band with feather. Feather has red paint at tip. Not the same face as the Indian Chief.

30. Indian Chief— The Chief has a flexible rubber headdress, either painted or a mottled, marbled color. (From the Bicentennial collection)

31. Indian Squaw— (From the Bicentennial collection) She has two extras: Black hair with pigtails and a separate headband.

32. Pilgrim— (From the Bicentennial collection) Three extra components: Long straight blond hair, a black hat, and a separate hat band.

33. Pilot— Four extra parts: A blue cap, black visor, yellow cap insignia, and gray earphones.

34. Spaceman— Same as "Cocoa Marsh" but without the Cocoa Marsh name on the side of the dispenser.

35. Stewardess— Female head with blonde bouffant, blue cap, and yellow insignia— three extra parts.

Thor— See under "Licensed Characters".

36. Uncle Sam— White goatee, white hair, and a tall gray top hat. Around the hat is pasted a stars and stripes pattern. (From the Bicentennial collection)

37. Wounded Soldier— Has brown

hair (cover whole head, not like Captain or Pilgrim) and a white bandage around the temples. Bandage may or may not have a blood spot. (Bicentennial).

Zorro— See under "Licensed Characters".

Animals

38. Cat with Derby— Called "Puzzy Cat" by the PEZ company, this kitty is a four-piece head: the head (either red or black), the nose/mouth, a derby hat, and a separate piece for the whites of his eyes.

39. Chick in Egg— Another perennial Easter offering, this is usually a three piece head. A yellow chick with painted beak is the largest piece, but he sits inside an eggshell, and is usually wearing a flat, round hat. However, there is a variation of this dispenser in which the chick wears no hat at all, but has a complete head.

40. Cockatoo— A three piece bird, composed of a round head, a huge open beak, and a piece resembling three topknot feathers. There's a small dab of paint on each eyeball. It comes in several color variations.

41. Cow A— The simplest of the two cows, this one features a large head piece, a separate nose piece (with two nostrils, but no mouth), and a piece for the whites of the eyes. Originally called Moo Moo Cow A.

42. Cow B— A revelation came to me as I studied this head. It's exactly the same head as the Dog (Yappy)! Check it out! On a vaguely pear-shaped head are glued two round ears, two horns, a pair of eyes, and a big, oval nose (nostrils are actual holes in the nose) above a darling smile, a total of seven pieces. Originally called Moo Moo Cow B.

43. Crocodile— Two pieces: a large green head, with red eyes. Upon

examination, the eyes are not pressed onto the outside of the head, but protrude **through** the head from inside.

44. Donkey Kong, Jr.— Offered as a mail-in premium by Donkey Kong cereal, this dispenser is exactly the same as the Monkey Sailor (see below), except that a small, yellow "J" (for Junior) sticker has been applied to the front of the cap.

45. Dog— A five-piece head, using the same basic head as Cow B. The four extra pieces are a black nose, two black ears, and a separate piece forming the eyes.

46. Duck with Flower— Despite the PEZ Poll, I think this is the goofiest dispenser. PEZ lists it as part of the Easter collection (they call it "Duckie"), but I can't think why. I also don't know why there should be a big, six-petaled flower on top of his head. The duck has four pieces in all: the head, the flower, the whites of the eyes, and the huge lips/bill which cover much of the face.

47. Easter Bunny (original)— Elegantly simple, the first Bunny was a single piece of ivory-colored plastic with no painted features and long, back-pointing ears. There are some variations; some rabbits have whiskers, some have buck teeth, some have neither.

48. Easter Bunny Die-Cut— Same as above, but with outline of rabbit holding paintbrush and eggs cut through the side of the dispenser.

49. Easter Bunny (remake A)— This bunny was issued year after year after year and if you don't have one, you're doing something wrong. Ears go almost straight up and are wide, with circular indentations. The eyes are almost on the side of the head, rather than the front. Eyes and nose are painted. The single piece head is usually light yellow or

pink.

50. Easter Bunny (remake 1990)—

The brand-new bunny is a one-piece white head with small decals applied for the eyes and nose/mouth and pink inside the ears. Ears form a V-shape.

51. Elephant— This is one of those dispensers with several variations. The elephant head is one large piece, with a trunk that goes up above the top of the head. A separate piece forms the tongue. A third piece sits on top of the head and this is where the variations occur. There are flat, round hats, there are pointy, Chico Marx hats, and there are even Elephants with hair. All of these are in several colors. Good luck.

52. Giraffe— PEZ calls this "Mama Giraffe", but I think that's hard to prove, since there's no Baby Giraffe. An orange head with two oval black eyes glued on and black paint on the tips of the horns.

53. Gorilla— Doesn't look much like a gorilla, but doesn't look much like anything else, either. A dark brown or black one-piece head with five teeth poking out of a grimacing mouth, it's just plain ugly. The round, expressionless eyes are painted red and the teeth are painted white. The same mold, minus one eye, forms another dispenser, the Monster (see under Monsters)

54. Lamb— A familiar sight every Easter for at least a dozen years, the lamb is a one-piece head, with painted eyes, nose and ribbon bow on top.

55. Little Lion— Two pieces form this little lion. A reddish-brown mane forms most of the head, but a light tan piece glued onto the front contains the ears and face. The tongue is painted and the eyes are tiny pinholes through the tan face.

56. Lion with Crown— A surpris-

ingly complex head with five pieces: The back of the head forms the base and also pokes through the front as the eyes and tongue. The other pieces are a large mane which completely encircles the head; a crown on the top; a piece which forms the ears, face, nose and mouth; and a separate piece forming the cheeks.

57. Lion's Club Lion— Made as a special souvenir for the Lion's Club International Convention in Nice, France in 1962. It's a single-piece, realistic lion's head in a light ivory-orange color. The base is lavender and says "Lions Int. Convention 1962, District 114, Austria, Osterreich."

58. Monkey Sailor— Both this monkey and the next dispenser have three pieces, but they're totally different. This one has a light brown head. A light tan piece forms the entire face and ears. The eyes are pinholes through the face piece and the tongue is painted red. A small round white sailor cap sits on top. See also: Donkey Kong, Jr.

59. Monkey with Baseball Cap— This monkey has a very long, grinning face, which narrows to a small round head. The eyes are a separate piece, as is the billed cap. This dispenser comes in many different color combinations.

60. Panda— Just for the record, folks, pandas are **not** bears. This one has a white head, with five black pieces added for the two ears, two eyes and nose.

61. Panther— This one looks like it should be a famous cartoon character, but it's not. It has a large, blue, smiling head, with two small pieces added: yellow eyes and a triangular pink nose.

62. Pony— PEZ calls this "Pony-Go-Round", a needlessly complex name for one of the best-looking dispens-

ers. It's a five-piece head. There's the horse head itself, plus two round eyeballs, a curly mane, and an intricate bridle. Comes in several color variations.

63. Rabbit— This dispenser is exactly the same as Thumper (see Licensed Characters) except it lacks the Disney copyright.

64. Raven— The raven has a black head and a separate white piece for the whites of his eyes. He has a large yellow beak and red spectacles, although Ravens have also been found with red beaks and yellow glasses.

65. Rooster— A two-piece head, consisting of a bland head and a huge, flamboyant red comb/wattle piece.

Licensed Characters

Hint: Every "licensed" character **must** have a copyright notice somewhere on the head. If you're having trouble identifying a dispenser, look

first to see if it's a licensed character!

66. Annie— This dispenser was not on the market for very long, it seems to me. The funnies' famous li'l orphan girl has a two-piece head, consisting of a flesh-tone face/head with decal features, and an orange wig.

67. Arlene— Garfield's girlfriend was first available in other countries, but is supposedly marketed in the US now, although I haven't seen it yet. The dispenser and head are both pink. The only difference in shape of head from the original Garfield is that Arlene has a pair of big lips, painted red. She also has the half-open eyes, but hers have three eyelashes on the outer side of each eye. I believe this facial features are decals, rather than painted additions.

68. Baloo the Bear— From Disney's

Jungle Book movie, this bear is an unusual dark blue/gray color. The snout is a separate, light tan-colored piece. Eyes are painted on.

69. Barney Bear— An MGM character, Barney has a large, tall brown head. A separate white piece forms his eyes, nose, cheeks and mouth. Nose, tongue, and eyes are painted, and he has a big smile.

70. Batgirl (soft head)— One piece, soft rubber head, the basic color is blue, but the brown hair, eyes, and lower face are all painted on.

71. Batman (hard head)— Blue cowl, with flesh-colored face piece. Still available.

72. Batman with Cape— Same as above, with the addition of a plastic, bat-winged cape which hangs about two-thirds of the way down the body.

73. Batman (soft head)— There has been speculation that the soft-head superhero dispensers used heads left over from another toy manufacturer. I don't know if that's true or not. This head is one piece of soft rubber and bears a 1978 DC Comics copyright. His eyes and the bottom part of his face are painted, but the cowl is all blue.

74. Bozo the Clown— One piece clown head, with red-painted nose, hair, and mouth. Some Bozos have the ruffled collar painted blue, but most don't.

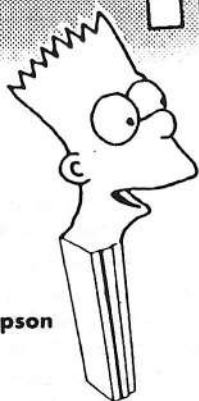
75. Bozo Die-Cut— Same as above, with pictures of Bozo and "Butch" die-cut into side of dispenser.

76. Brutus— One-piece black head. His face is painted flesh, as is the mouth between his moustache and beard.

77. Bugs Bunny— The famous buck-toothed rabbit has a two-piece head: A white piece forms the bottom half of the head, the eyes, cheeks, etc. and a grey piece which forms the upper half and ears.

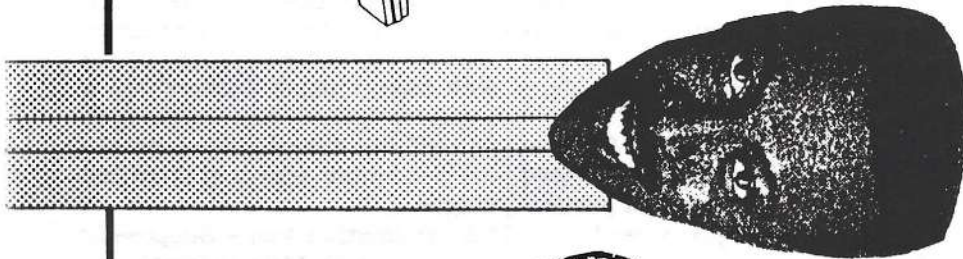
- 78. Bullwinkle**— Brown moosehead with two yellow antlers. Eyes and nostrils are painted.
- 79. Captain America**— Utilizing the basic human head, PEZ placed a two-piece cowl/mask on it—one piece covers the forehead down to the nose, the other covers the back and sides of the head, except for two ear holes. On the forehead piece is a plastic letter "A". The small wings on the sides of the head are painted white. There's supposed to be a Captain America movie this summer; we'll see if PEZ capitalizes on it.
- 80. Captain Hook**— One of my favorites, just because of the great detail in the face. Peter Pan's arch-foe has a fiendish look, squinting one eye and grinning crookedly. The moustache, brows, eyes and teeth were all painted (more carefully than it would be now) and the long black wig completes the character.
- 81. Casper the Friendly Ghost**— A simple, white, one-piece head with blue eyes and mouth painted. No ears, no hair, just a head.
- 82. Casper Die-Cut**— Same as above, but side of dispenser shows two poses of Casper cut through the plastic.
- 83. Charlie Brown**— Coming soon to a KMart near you.
- 84. Chip (of Chip-n-Dale)**— Another of the dispensers that causes collectors to wonder, this doesn't look like any Chip I've ever seen. First of all, the head is pink. A white piece covers the nose/cheek area, sweeping almost to the back of the head. A small round black nose is seated atop the white piece and a black top hat sits on the earless head. The Disney copyright is on the right temple. Not sold in the US.
- 85. Cool Cat**— One of the more obscure Warner Bros. cartoon characters, Cool Cat has an orange head. A separate piece forms the blue mouth/muzzle. The ears and nose are painted black and the eyes are painted white. The ears form a "V" on top of the head and the licensing info is on the back of them.
- 86. Creature from the Black Lagoon**— One of three Universal Pictures movie monsters to become PEZ dispensers (the others are Frankenstein and the Wolfman), the Creature is a very detailed likeness. Two halves make up the head, front and back. The eyes and mouth are cut out. The head and body are both a pretty, pearlized light green. This same head, minus the Universal Pictures copyright, was used for the Fishman (see Monsters).
- 87. Daffy Duck**— Not a very good likeness of Daffy, but still recognizable. Mostly consists of a black head with three topknot feathers (not a separate piece) and large eyes painted on. The only extra piece is the yellow bill with a painted red tongue.
- 88. Dalmation Pup**— Supposedly one of Disney's "101 Dalmations", although I don't know which one. This non-US dispenser is a one-piece, with painted eyes, nose and spots. The back of the head bears the world's smallest copyright notice; just try to read "Walt Disney Productions".
- 89. Donald Duck**— The original Donald head was just two pieces. The white head features painted black eyes and the yellow bill is painted, not a separate piece. The blue cap tops off the head.
- 90. Donald Duck Die-Cut**— Same as above, but side of dispenser features heads of Huey, Dewey and Louie cut through the side.
- 91. Donald Duck (remake 1989)**— The current Donald has three pieces.

HOLLYWOOD!



Bart Simpson

One of the obvious PEZ categories missing is a series devoted to past and present Hollywood stars. Who wouldn't love to see a W.C. Fields dispenser? Liz Taylor? Charlie Chaplin?



Arsenio Hall
Way Cool TV Host



Marilyn Monroe

GOOD PEZ

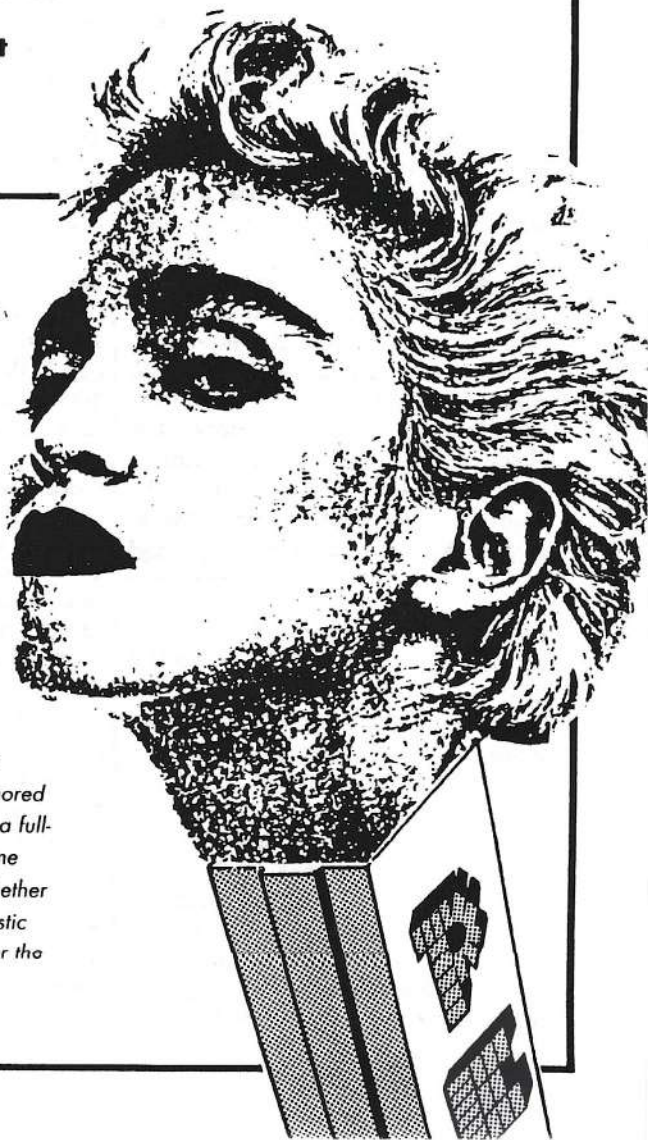
s **Buckwheat!! The list goes on and on...**

For now, here are just a few visual nominations...are you paying attention, PEZ company?!

Madonna,



Roseanne Barr
PEZ company rumored to be working on a full-body version. Some concern about whether the amount of plastic needed will render the dispenser cost-prohibitive.



The white head is substantially taller than the original, with bigger eyes. The yellow bill is now a separate piece and the blue cap has been redesigned.

92. Dopey— Two piece head. Dopey has a flesh face with big ears; the eyes and mouth are cut through the face. A reddish-brown cap completes the head.

93. Duck Child— Representing either Huey, Dewey or Louie, the Duck Child has a spherical white head. A small yellow bill is stuck on the very bottom of the face and a round, billed cap sits on the top back of the head. Two black dot eyes are painted on and a bit of yellow highlights the feathers above the left temple.

94. Dumbo— Dumbo has a head with huge ears. A matching piece forms his mouth and trunk, and his little cap is piece number three. He can be blue or gray. Don't mistake him for the Elephant dispenser. Look for the Disney copyright on back of the head.

95. Droopy Dog— Remember the elevator operator in "Who Framed Roger Rabbit?" That was Droopy. Unlike most of the newer dispensers, this one has five pieces, a flesh-toned muzzle, white head, two black ears and red topknot. Eyes, brows, and nose are painted. This MGM character dispenser was not issued in the US.

96. Foghorn Leghorn— the famous, Southern-talkin' rooster from Warner Bros. cartoons ("I say, I say theah, boy!") is a peculiar yellowish-brown color head, with two extra pieces: the yellow beak, and the red comb on top. A wattle under his mouth is painted red. White circles are painted around the eyes.

97. Frankenstein Monster— One of the three Universal Monster PEZ, Frankie has a light gray, one-piece

head. The black hair is painted on, along with a red scar on the forehead. The eyes are cut through the face.

98. Garfield (smiling)— The first Garfield dispenser issued is all orange, with the three characteristic black stripes on the back of his head. A decal face shows his sly grin and half-closed eyes. Two other small, black decals highlight his ears.

99. Garfield (showing teeth)— This non-US dispenser is a different mold from the smiling Garfield; the two ears point straight up. The face decal depicts Garfield's wide-open eyes and he is grinning, showing a dozen teeth.

100. Garfield (wearing visor)— First issued in other countries, this dispenser became available in the US in early 1990. The ears point straight up, like the previous, toothy dispenser, but the face is like the first Garfield, half-open eyes and a smirk with no teeth showing. A green visor cap is the notable addition.

101. Goofy— A seven-piece head and still ugly! Pink face, two white teeth, two black ears, a black hair-piece and a red cap, plus painted eyes and nose. Some later variations had the ears attached to the hair.

102. Goofy (remake 1989)— The new Goofy is a much better likeness and a fairly complex head for these days. The head is black and the ears are no longer separate pieces; they are part of the head mold. The black nose is part of the head (if you want to see something bizarre, take apart this Goofy) as well. A pink piece forms the snout and mouth and a white piece forms the eyes. The teeth, in an interesting piece of design, are part of the eyes! Must be eye-teeth! A green hat is the fourth piece.

103. Green Hornet— Basic human head with a green face mask and

green fedora hat, a total of three pieces.

104. Henry Hawk— Another Warner cartoon character, Henry's head is a vomitous yellow-brown color like Foghorn Leghorn's. There's only one extra piece, a thin, small yellow beak. Eyeballs are painted on.

105. Hulk— The Hulk comes in two different shades of green, but he's a two-piece head, comprised of the head and a separate hair piece.

106. Jerry— Half of the MGM Tom-Jerry cartoon team, this mouse is a one piece brown head with a lot of paint on it. The insides of the ears, the eyes, the nose, cheeks, tongue and whiskers are all painted on.

107. Jiminy Cricket— Frequently found with missing parts is this Disney character, who has a six-piece head. The largest piece is the cricket's flesh-colored face. The top hat is actually three separate pieces: brim, crown and band. Then there are two flimsy green collar pieces attached to the lower jaw.

108. Joker— Another "soft-head", which PEZ could have sold a zillion of if they'd brought it back last year. One piece, painted head depicts the white-faced, green-haired, red-lipped Clown Prince of Crime.

109. King Louie— The orangutan king of the jungle in *The Jungle Book*. The main part of the head is light brown and has a large, protruding mouth with a pouty lower lip. A separate, darker brown piece forms the hair and two very long sideburns which reach all the way to the bottom of the head. The Disney copyright is in fact covered by the right sideburn. Eyes are painted.

110. Li'l Bad Wolf— Frequently mis-identified, I've heard this character called "white-faced cat" or even "Figaro" (the cat from *Pinochio*),

but he is in fact the younger version of Disney's Big Bad Wolf. It's a one piece white head, with black paint forming the top of the head and ears. Eyes and nose are also black paint and the tongue and inside the ears are marked with red paint.

111. Lucy Van Pelt— Available now in Europe, coming soon in the US.

112. Mary Poppins— Mary has a large head, with painted eyes and lips, red-brown hair, and a pink hat on top.

113. Merlin Mouse— Another of the less-known Warner Bros. characters. In spite of his obscurity, PEZ put some effort into this four-piece head. The basic mouse head is gray, with a flesh-colored piece which forms the mouth, cheeks, and bow tie. A brown button nose is fastened on the flesh piece and a green top hat completes the character.

114. Mickey Mouse (original)— No other character has had as many versions as Mickey Mouse, a tribute to his long-lasting, universal popularity. The original version is easy to recognize. Unlike later Mickeys, the original's facial features (eyes, brows, and mouth) are cut through the pink part of his face. A large round hole in the center of the pink mask allows a large black, upturned nose to poke through. Sometimes an older Mickey is found without the pink mask; these are not just unpainted. They are missing the whole face piece.

115. Mickey Mouse Die-Cut— Basically the same head/face as the original Mickey dispenser, but with the figure of Minnie Mouse cut through one side of the dispenser body. See O.P. #2 for photo.

116. Mickey Mouse (remake A)— The first remake of Mickey was a completely new mold, with larger ears which curve inward more than the original. A pink face piece was

also used on this model, but the eyes and tongue were painted on the face. The only hole in the pink piece holds a small black nose which sticks on with a tiny stem. These tiny noses are frequently missing. In fact, if your Mickey doesn't have a black nose, it has to be Remake A.

117. Mickey Mouse (remake B)— There's only one small difference between this Mickey and Remake A: The black nose is now a part of the head itself and pokes through the pink mask.

118. Mickey Mouse (remake 1989)— In 1989, PEZ redid four Disney dispensers, greatly improving the looks of them. The new Mickey is still a two-piece head, but the pink mask has holes for the nose and for the painted eyes. The most notable difference is just below the chin; part of the black head-piece forms a collar or bow-tie.

119. Mowgli— Also from the Jungle Book, this often misidentified dispenser has a tiny, orange-ish face and a big black wig. His eyes are painted.

120. Nermal— Garfield's nephew in the comics, this is the basic Garfield mold and decals, but done in all gray plastic. Supposed to be out in the US this year.

121. Olive Oyl— Another early one-piece head. Olive's distinctive hairdo with bun is black plastic, but her face is painted in flesh color. Eyes and mouth also painted.

122. Papa Smurf— The elderly Smurf uses the same head as the original Smurf (see below), but his stocking cap is red instead of white. Additionally, a white beard has been stuck on his face.

123. Penguin— Not a bird, but a Batman villain, this soft-rubber head is flesh-tone, with a monocle, eye, and hair painted black and a top

hat painted yellow.

124. Peter Pan— Nicely made, Peter has a flesh face with painted eyes, an orange hairpiece and a green cap with painted red feather.

125. Peter PEZ— The official PEZ clown has a two-piece head (See cover of this issue and sample PEZAZZ photo). Big white head, painted with blue, yellow and red, topped by a blue hat with "PEZ" stencilled on.

126. Petunia Pig— Porky's girlfriend has a two-piece head: A flesh head with two pointy ears, which poke through the black, pig-tailed wig. Pig-tailed, get it?

127. Pinocchio (original)— The first PEZ Pinocchio had a light pink head with a long nose. Black hair is painted on, and the cap (red or yellow) is the second piece.

128. Pinocchio (remake)— The basic piece is black and it forms the hair and a feather which sticks through the cap. A pink face with pinhole eyes covers the front of the head, and a red cap sits on top.

129. Pluto— Pluto is easily recognizable, with his orange head and long black ears. His eyes and nose are painted and the two ears are separate pieces.

130. Pluto (remake 1989)— The newer version of Pluto is a one-piece head. The eyes, nose and even the ears are painted on.

131. Popeye (original)— The early Popeye was a one-piece head. The sailor's cap was painted white and black and his eyes, mouth, and pipe were also painted black. Face came in flesh color or a strange, pastel yellow.

132. Popeye (remake)— The later Popeye looked much better, with a larger, flesh face and a separate cap or red or white. A tiny black piece served as his pipe, though some later

Popeyes didn't have this part. Close examination reveals that this pipe is the same piece as the nose of Mickey Mouse Remake A!

133. Practical Pig 1— Why PEZ made two versions of the smartest member of the Three Little Pigs is unknown. The earlier version is recognized by ears which extend back and upwards at about a 45° angle. The head is flesh-colored; eyes are painted on, as is the red tongue. The blue cap is flat on top with a small round bill.

134. Practical Pig 2— Pig 2 has similar parts, the flesh head and blue cap, but the ears of this pig go straight back and flare out to the sides. The painted eyes are smaller than on the original and the cap is a different mold; it is not flat on top, but sinks in in the center and the bill of the cap is not symmetrical.

135. Road Runner— Purple head includes the huge topknot. A large yellow, pointed bill is the second piece. Eyes are painted.

136. Scrooge McDuck— Also known as Uncle Scrooge, this head begins with the basic original Donald Duck head, but with four extra pieces. A hole in the top of the bill holds a pair of black spectacles. Two white side pieces form feathery "sideburns" which sweep past the back of the head. A black top hat completes the head. By the way, you may find a Donald Duck made from a Scrooge head, identifiable by the hole in the beak.

137. Smurf— First came the basic Smurf, a white stocking cap and a grinning blue face. Notice that the eyes are part of the cap, not the face.

138. Smurfette— This female smurf does not use the same head mold as the other two. She has no ears, but wears a blond wig and a similar, though not identical, white

stocking cap.

139. Snoopy— New this year. Keep looking.

140. Snow White— One of the most informative parts of making this list was taking apart dispensers to see how they were made. In the case of Snow White, removing the black wig from the flesh face reveals why her hair bow is always the same color as her collar— they're the same piece! Snow also has eyes and mouth cut through the face piece.

141. Speedy Gonzales— This rapid rodent has a mousey-brown head with painted features and a large yellow sombrero.

142. Spiderman— Originally, the red Spiderman head had two, separate eye pieces which were black with painted lenses. Later variations have eliminated these extras.

143. Spike (Bulldog)— MGM character, Spike has a large, dark brown head, and a pink, open-mouthed muzzle (two separate pieces). His nose is formed by a brown peg which sticks through from the back of the pink piece.

144. Sylvester— Warner Bros. hissing puddy tat, Sylvester has a three-piece head. A black piece forms the head, ears, and three tiny hairs on top. A white piece forms the whiskers and mouth and a red, oval-shaped nose completes the head.

145. Thor— Uses the basic human head with a long blond wig and a silver helmet with big wings on the side. Probably the widest head of all.

146. Thumper— Kinda tough to identify because it doesn't look much like the cartoon rabbit. Head is light orange, one piece, with a small dot of paint for a nose. Eyes and teeth are also painted. Ears point backwards along top of head. Also see "Rabbit" under the "Animal" category.

Richie Sternfeld PEZ Auction #5

Closing Date: Friday, May 11, 1990

Rules

1. I will accept mail or phone bids.
2. You may call after 4:00 p.m. (Eastern Standard Time) on the closing day (**May 11**) to check the current high bid or raise bids.
3. There are no minimum bids.
4. Invoices will be mailed to the successful bidder the day after the auction. I must receive payment within two weeks or the item(s) will be offered to the next highest bidder.
5. The winning bidder pays postage, minimum of \$1.50.
6. The auction will end at 9:00 p.m. (E.S.T.) or when 15 minutes pass without the phone ringing.
7. Bids must be raised by a minimum of 10%.
8. Closing night, all bids/raises will be rounded off to the nearest dollar.

**Richard Sternfeld
90-60 Union Tpke.
Glendale, NY 11385
(718) 805-1967**

**See Color Photos of all auction
items in the enclosed
envelope!**

Dear collectors,

Please note that I will not have an auction during the summer (July issue of O.P.)

I hope you all have a great summer.

I hope to do some buying in the meantime and hope to have an exciting auction in the September issue of O.P.

1. **Frankenstein.** 1st series. Austria.
 2. **Dopey.** 1st series. Austria. Few "melt" spots on base.
 3. **Wounded Soldier.** No patent number. Austria.
 4. **Uncle Sam.** No patent number. Austria.
 5. **Captain.** No patent number. Austria. Few small "melt" spots on base
 6. **Betsy Ross.** 1st series. Austria.
 7. **PEZ Pal Knight.** 4th series. Austria.
 8. **PEZ Pal Sheriff.** 4th series. Austria
 9. **Donald Duck.** 1st series. Austria. **This is a die-cut.**
 10. **Brutus.** 1st series. Austria. No spring action in head.
 11. **Angel.** 2nd series. Austria.
 12. **Batman.** 2nd series. Austria. Black visor.
 13. **Captain America.** 4th series. Austria. Blue visor.
 14. **Henry Hawk.** 4th series. Austria. Has feet.
 15. **Rooster.** 1st series. Austria.
 16. **King Louie.** 1st series. Austria. Some "melt" spots on base.
 17. **Full-bodied Spaceman.**
 18. **Brochure/enclosure.** Mint.
 19. **Paper costume.** Native. Series A#6.
 20. **Paper costume.** Pilgrim. Series A#5.
- Items 21-39 are unopened packages.
21. **Popeye.** 1st series. Austria. Molded hat, yellow face. Has Popeye enclosure and one pack of candy is missing.
 22. **Mickey Mouse.** 2nd series. Country?
 23. **Donald Duck.** 2nd series. Country?
 24. **Zorro.** 2nd series. Country?
 25. **Goofy.** 2nd series. Austria. Yellow face.
 26. **Pluto.** 2nd series. Country?
 27. **Daffy Duck.** Series & country?
 28. **Sylvester.** 4th series. Hong Kong.
 29. **Tweety.** 4th series. Hong Kong.
 30. **Speedy Gonzales.** 4th series. Hong Kong.
 31. **Moo Moo Cow, style A.** 1st series. Austria. Contains sticker inside package.
 32. **Puzzy Cat.** 1st series. Austria. Contains sticker inside package.
 33. **Raven.** Series and country? Contains sticker inside package.
 34. **Wonder Woman.** 4th series. Austria.
 35. **Mickey Mouse.** 4th series. Hong Kong. Has feet.
 36. **Bugs Bunny.** 4th series. Hong Kong.
 37. **Hulk.** 4th series. Hong Kong.
 38. **Garfield.** 4th series. Austria. Has feet.
 39. **Whistle (yellow/red).** Series and country? Has feet.

**Remember, Closing date is
Friday, May 11**

147. Tinkerbelle—Tink has a flesh-colored head and a white-blond wig with a bun on top. Her eyes and lips are painted.

148. Tom (cat)— of Tom-n-Jerry fame, this dispenser features a large gray cat's head, with several painted features: eyes, brows, nose, muzzle, tongue, whiskers, and insides of ears.

149. Tweety— Tweety has a large, bulbous yellow head. The blue and white eyes and the small orange bill are painted on. The only extra piece is a black part which forms three thin hairs/feathers on top of the head.

150. Tyke (Bulldog pup)— Another MGM character, paired with Spike (above). This pup is similar to Spike, but a lighter brown, smaller head. He has a separate piece for his pink muzzle. A brown peg sticks through the pink part to form his nose.

151. Wile E. Coyote— The Roadrunner's famous nemesis has a two-piece head. A brown piece forms the head and ears and a separate tan piece forms the cheeks and long, curving snout. There are painted accents on the ears, eyebrows and eyeballs.

152. Winnie the Pooh— Not sold in the US for some reason, Pooh is a single-piece head, yellow-gold. Red tongue, black nose and eyes are painted on.

153. Wolfman— The last of the Universal Pictures PEZ, the Wolfman is light gray plastic, with absolutely no paint. The eyes and mouth are cut through the head, not painted on.

154. Wonder Woman (soft head)— The first, rubber-headed Wonder Woman, was a beautiful dispenser with skin tones that even showed the blush in her cheeks. It was all one piece, but nicely painted.

155. Wonder Woman (hard head)— The current Wonder Woman is two

pieces: head with headband, and black wig. But she looks like a cheap mannequin.

156. Woodstock— Available soon.

157. Zorro— The basic human head with a black hat/mask. On some, the mask goes all the way around the back of the head; on others, it tapers up into the hat. A moustache is painted on.....most of the time.

158. Zorro (name on side)— Same as above, but on one side of the dispenser body, the word "PEZ" is replaced by the "Zorro" logo.

Christmas

159. Angel— This pretty cherub has a flesh-colored head, a wavy blond wig, a gold halo, and two white wings, a total of five pieces. Eyes are painted.

160. Rudolph— A three-piece head, Rudolph is an orangey-tan color. His two ears are separate pieces. His famous red nose is painted, along with his tongue and black eyes.

161. Santa Claus (full-bodied)— I wish PEZ would make some new full-body dispensers! They are among the best dispensers ever made. This Santa is off-white, but his jacket and cap are painted red and his boots are painted black. "PEZ" runs across his chest. The head opens at the mouth line, which means Santa's beard and collar are part of the body piece.

162. Santa Claus A— This Santa has a head similar to the full-bodied Santa, but on a regular dispenser body. The cap is painted red, but the head is otherwise off-white. One difference between this head and the full-bodied one— the beard on this Santa is part of the head, not the body.

163. Santa Claus B— This Santa has a very small head of white plastic. His cap is also painted red, but

he also features a flesh-painted face and painted black eyes. His beard does not extend below the base of the head.

164. Santa Claus C—The first dispenser many collectors ever had is the Santa which has been issued and reissued for many years. No painting is needed on this three-piece head. There's a flesh face, a white piece which comprises the beard, moustache and fringe on his cap, and a red cap piece.

165. Snowman (original)— You might not even notice that today's Snowman is different from the first model, but it is! The first Snowman featured a round white head, with five extra pieces: Black top hat, red carrot nose, two black eyes of coal, and a mouth which looks like eight pieces of coal.

166. Snowman (remake)—In keeping with the trend toward simplification and economy, the recent Snowman only has three pieces: The white head, a shorter black top hat, and a red carrot nose. The eyes and mouth are now painted on.

Monsters

167. Air Spirit— There are six soft rubber-headed monsters, called Eerie Specters by PEZ. They are difficult to describe and their names tell you nothing about them. For more details, get a copy of the final issue of The Old Variety Store, which pictures all six. The Air Spirit has a pointy, fishy looking head, with menacing fangs. All the Specters are single-piece heads. This one has painted green and white eyes.

168. Diabolic— (An Eerie Specter, soft-headed monster) An orange head, looking somewhat like the Phantom of the Opera, Diabolic has

black paint around his eyes, ears, and collar. His mouth is painted red.

169. Fishman— Same head as Creature from the Black Lagoon (see "Licensed Characters"), except without the copyright. Also, the Fishman is not made from the pearly green that the Creature is. The Fishman usually has an emerald-green head and orange body. A rare variation has a shiny black head and lavender body!

170. Monster— Okay, here's the story: The Gorilla (see "Animals") mold was used to make another character and only two things changed. First, this head only has one eye; the left socket is empty. Second, his head is orange or light brown. Otherwise, it's the Gorilla, okay? But PEZ chose to call this one "Creature", a name I have changed to avoid confusion with the Creature from the Black Lagoon, who is also the Fishman. Got it?

171. Mr. Ugly— I nearly changed this guy's name to "Buck-toothed Ghoul", but decided to leave him alone. According to PEZ, he is also known as "Scrooge"! He still comes around each Halloween, with his pea-green face, lined with wrinkles and two buck teeth, and his black fright wig. Red eyes and mouth are painted, as are the white teeth.

172. Octopus— Also known as "Blob", this really looks more like an octopus. Actually it's a nonapus, since careful examination reveals nine tentacles. The one-piece head has painted eyes and comes in black, red, or orange.

173. Pumpkin— Not as simple as it first appears, the Pumpkin is an orange head, but the face is a separate orange piece with a flat, black piece behind it.

174. Scare Wolf— (An Eerie Specter, soft-headed monster) On a light gray head, orange paint has been sprayed over the top of the head and ears. The

eyes are black and the mouth is highlighted red. Only the ears are "wolf"-like.

175. Skull— Called Dr. Skull or Deadhead by PEZ, this is simply a white skull with a high black collar. Interesting to note that a small black piece has been placed inside the skull to make it look dark through the eye holes.

176. Spook— (An Eerie Specter, soft-headed monster) Should have been called the Blue Devil. This guy has horns on his blue head, sprayed with white accents on horns, cheeks and ears. Teeth are painted white; eyes are painted red.

177. Vamp— (An Eerie Specter, soft-headed monster) Actually looks sort of like Dracula. It's a white head, but has been sprayed with gray/black. The "whites" of the eyes are in fact green. Red teeth and a red scar on right cheek. Collar is black. All one piece.

178. Witch Regular— A Regular-style, headless dispenser, with orange body and black flip-top. On the body is painted a witch on a broom and the word "PEZ", not in the distinctive block letters on other dispensers.

179. Witch (one-piece)— When Steve Powers compiled his list of PEZ in The Old Variety Store, he noted two witches. "Witch A" was his name for the Witch Regular described above. The other witch known at the time was called "Witch B"; it is described below. But another witch showed up in several collections later. It was called "Witch C" in spite of being older than "Witch B". This list corrects that flaw. This witch has a one-piece orange head which is finely detailed with flowing hair, curving nose, and a pointy hat with a flower on it. The body is black and one side features a broom-riding

witch, molded into the plastic.

180...Witch (three piece)— A very common dispenser which pops up every year, this witch usually has a green, hook-nosed face, a red wig, and a black witch hat. There are many other color variations, but they are no longer being sold. On the list of PEZ many of you have from OVS, this was called Witch B.

181. Zombi— (An Eerie Specter, soft-headed monster) A purple head with mournful eyes, a stubbly moustache, prominent nose, and lots of wrinkles. Oversprayed with black. Teeth are painted white and he has green eyeliner above each eye. All one piece.

Whistles

There are three kinds of whistles. Most common is the one that looks like a coach's whistle, which is still available. Second is the group sold in the US as "Merry Music Makers" (sold on a blister card). Lastly is the "Whistling Zoo" group of whistles, which were not sold in the US. In the listing below, I have not counted the actual whistle mechanism when listing the number of pieces on a head, although it is, of course, a separate piece.

182. Camel— See picture in O.P. number one. The Camel is one of the rarer foreign whistles. He has a large brown head and a red fez. (Whistling Zoo—non US)

183. Clown— On a white head, two black X's are painted for eyes. A red piece composes the nose and large mouth. An orange fringe of hair encircles the head, and a green, flat-topped hat sits on top. (Whistling Zoo—non US)

184. Dog— This dog whistle looks a lot like Pluto; he has the same orange

head and two stuck-on black ears. But the ears are wider and flatter than Pluto's and there is no Disney copyright on the head. So it's just a dog. (Whistling Zoo—non US)

185. Donkey— One of the Merry Music Makers, the US whistles, this Donkey has a gray head with tall ears. A small pink piece forms his nose and mouth.

186. Duck— This whistle was one of the "Merry Music Makers". He's got a brown head with white eyes painted on. A yellow bill piece is stuck on the front.

187. Frog— Green head, with a yellow lower lip and jaw. The yellow piece extends up inside the head to form the eyes, which show through two round holes in the green piece. Black eyeballs are painted on. (Whistling Zoo—non US)

188. Indian— Not a realistic head like the other Indians, this cartoonish-looking brave has a dark flesh colored head, two decal eyes, a black wig, and a green feather in a headband. (Whistling Zoo—non US)

189. Koala— Harder to find than most of the Whistling Zoo, the koala has a smoothly-formed, one-piece head of a light tan color. A dark brown koala nose forms the second piece. (Whistling Zoo—non US)

190. Lamb— Another Merry Music Maker and totally different from the Lamb dispenser we see every Easter. It has a single-piece, off-white, fairly realistic lamb's head, with curls on top. Blue eyes and red tongue are painted. Ears are much smaller than the other Lamb and point down and out.

191. Monkey— Large brown piece forms the head and ears. A tan face fits on the front and features two tiny, black-painted eyes. (Whistling Zoo—non US)

192. Panda— Very similar to the

non-whistle panda, but not exactly the same. This one has the black ears painted on, instead of separate pieces. The white head piece does not have the forelock of hair which the other panda had. (Whistling Zoo—non US)

193. Parrot— A large red head holds two other pieces: a green, mask-like area around the eyes, and a yellow beak. (Whistling Zoo—non US)

194. Penguin— Another unusually complex head for these days, the Penguin has a black head, a white face piece, a long yellow bill, and a red ski cap. His eyes and eyebrows are cut through the white piece to let the black show through. (Whistling Zoo—non US)

195. Pig— One of the Merry Music Makers, this features a simple, one-piece pig head with ears that point forward. Two tiny blue eyes are painted on.

196. Rhino— Pictured in O.P. number one, the Rhino is also hard to find. He's got a mint-green head and a red horn. (Whistling Zoo—non US)

197. Rooster— This Merry Music Maker has a white head and a huge red comb, but they are not from the same mold as the other Rooster. This comb points forward and the eyes are part of the comb.

198. Tiger— The head is orange, with painted white eyes. A white piece forms the cheeks and whiskers and extends up between the eyes. The nose, which pokes through from the back part of the head, is painted black. The whistle part itself is white. (Whistling Zoo—non US)

199. Whistle— A simple whistle made of two halves in one of a zillion color combinations.

Miscellaneous

200. Arithmetic— Yes, it really does exist! I know of two of them in collections right now. The Arithmetic was a Regular-style headless dispenser. On one side of the body are several die-cut openings, through which can be seen columns of numbers. The Arithmetic functioned like a simple slide-rule.

201. Baseball Glove— A really nicely-made dispenser, you shouldn't have much trouble recognizing this one. It's a brown baseball glove! It should, however, have the white baseball glued into the mitt.

202. Candy Shooter— The middle PEZ gun, this one is not a space gun, but looks like a police revolver, black with gold handgrips. Another mall-in premium.

203. Clown with Collar— This has a white, fairly human face with pin-hole eyes and a painted red tongue. There are four extra parts: the bulb-shaped red nose, the reddish-brown moptop hair, the green pointy hat and a yellow ruffle collar which circles the entire bottom of the dispenser. My duplicate of this dispenser does not have a collar and I'm not sure if that is a variation or just a missing piece.

204. Clown with Long Face— On the other hand, this clown is not human looking at all! He has a long, sloping white head, much bigger at the bottom than the top, with painted dots for eyes. Check for three other pieces: a teeny derby, a fringe of hair, and a nose piece. He doesn't really have a mouth.

205. Golden Glow— A Regular dispenser with a metallic golden finish, offered as a premium.

206. Make-a-Face— Very rare. The

Make-a-Face was the PEZ version of Mr. Potato Head. The dispenser had a featureless orange head, and a dozen or so small pieces which could serve as different parts of the head. The package claimed that 158 different silly faces could be made. The number of small parts probably resulted in it being yanked off the market as unsafe for tots.

207. Orange— Round head looks like.....an orange! Two black eyes are glued on and a red smile is painted. A cap of three green leaves sits on top.

208. Pear— A one-piece head, yellow, with black eyes and mouth. The leaf which forms a visor is painted green and the stem on top is red.

209. Personalized— A Regular-style dispenser with a panel on one side of the dispenser on which you could emboss your name with some special gold carbon paper.

210. Pineapple— The rarest of the Crazy Fruits, the Pineapple has an orange head, green leaf topknot and white sunglasses.

211. Psychedelic Eye— Ah, yes! Only two pieces, but what wonderful pieces they are! Instead of a head, a large grasping hand tops the dispenser. It may be either flesh-colored or black. The hand grips a large white eyeball, with a painted green iris. Why? Nobody knows! One side of the dispenser body should have a sticker which says something like "Mod PEZ" or "Go-Go PEZ" or "LUV PEZ". Can be frightening to small children or cause acid flashbacks in adults.

212. Psychedelic Flower— With only one piece, this dispenser manages to be as demented as the one above. It's a lovely red rose, blossoming open at the top to show

eyeball, this one painted on. The dispenser body should also have one of the stickers mentioned in the Psychedelic Eye listing.

213. Regular—The one that started it all! Usually described as looking like a Bic lighter, the Regular or original dispenser looked like today's, except it didn't have a character head, just a small thumb-grip. It came in many colors; sometimes clear plastic was used for the body. One variation says PEZ BOX on the side.

214. Robot (Full-bodied)—One of the best! I'm going to call this the Full-Bodied Robot, although he is also known as Full-Bodied Space-man. We have plenty of spacemen! Pictured in O.P. #2, the Robot has been found in three colors: blue (actually found in light blue or dark blue), yellow and red.

215. Olympic Snowman—From the 1976 Winter Olympics at Innsbruck, Austria, comes this little snowman, much different from our Christmas Snowman. This one has arms growing out of the sides of his head and wears a tall, tapering red hat with a flamboyant white feather in front.

216. Olympic Wolf—A PEZ mascot from the 1984 Winter Olympics in Sarajevo, Yugoslavia. The wolf (named "Vucko") has a three piece head. The ears and head are either dark gray or brown. The very long snout is a lighter shade of gray or brown, and a big red, bulbous nose completes the character. Whites of the eyes are painted on. The back of the head bears the distinctive five linked rings, the symbol of the Olympics.

217. Olympic Wolf (Ski hat)—Same as above, with a knit-type ski cap in either red or yellow which covers the ears.

218. Olympic Wolf (Bobaled helmet)—Same as above, with a bobsled helmet which covers the ears, either red or yellow.

219. Space Gun (1950's)—The first spacegun was a small affair. It included a colored gun, with white caps on both ends, white trigger and white butt plate.

220. Space Gun (1982)—The later spacegun was much larger than the first. It came in red or silver, with black handgrips.

I'm not going to describe all the trucks. They all have a number on the driver's side, on or behind the door. Style "A" trucks have a single rear axle, Style "B" trucks have a dual rear axle with a fender which has an indentation between the rear wheels, and Style "C" trucks have a dual rear axle with a smooth fender with no indentation between the wheels.

221. Truck A#1

222. Truck A#4

223. Truck A#16

224. Truck B #R/1

225. Truck B#8

226. Truck B#9

227. Truck B#13

228. Truck C#1

229. Truck C#2

230. Truck C#3

231. Truck C#4

232. Truck C#5

233. Truck C#16

234. Truck C#R1— same cab as B#8

235. Truck C#R2— same cab as B#9

236. Truck C#R3— same cab as B#13

237. Truck C#R4

Unverified

There are several PEZ which, although they appear on an ad or box

or list from the company, have not been found to exist. They are listed for your information. If you find any dispenser listed below, please contact me immediately.

Judge— A PEZ Pal wearing the curly white wig of a Colonial Judge. Pictured on several boxes, but not yet found.

Happy Bear— Listed by PEZ as one of the Circus dispensers.

Tamie the Tiger— Listed by PEZ as one of the Circus dispensers.

Li'l Bad Wolf with Hat— Wolf was pictured in promotional material as wearing a hat. Not known if he was actually sold with one.

And that does it for now! My wrists and shoulders will never be the same! My special thanks go to Maryann Kennedy, for sharing the info that she has accumulated.

Back Issues of the OPTIMISTIC PEZZIMIST!

Yes, a limited number of back issues is available for new subscribers or those who just want to have extra copies of what is sure to be a collector's item in the future.

Copies of Issues 1 and 2 are available for five dollars each. Orders:

Mike Robertson
P.O. Box 606
Dripping Springs, TX
78620

the PEZZANT market

I'm interested in horror movie PEZ, Peter Pan, Zorro and Rocky the flying squirrel (if he exists). Interested in buying or will trade used books. Rupert Wondolowski; 523 E. 38th St., Baltimore, MD 21218.

Attention, NeoPEZZERS! I have dupes for sale (or trade), priced right! Have: Pumpkins, Santas, Mickeys and (mutant) Donalds (Hong Kong). Also few Plutos (moveable ears). ALL HAVE FEET. \$3.00 each, includes postage. Callee Jo Smith; 38 Calhoun; Pueblo, CO 81001. 719-544-2642 Days, 719-545-

5356 after 6:00.

Wanted! Cereal box prizes from the 60's and 70's. Rings, transfers, stickers, snap-togethers, figural items, anything. Write me...or I'll tear open my mint/sealed Psychedelic Flower!!! Graham Trieval; Box 481, Rt. 113; Lionville, PA 19353.

Greetings to all Pezzers in O.P. land. Hope you each find the dispenser of your dreams. I'm still obsessively seeking PEAR and PINEAPPLE. HELP! Excellent traders available or will pay top prices for these. Looking for ANY-

THING PEZ, premiums, whatever. Maryann Kennedy; 409 N. 5th; Marshall, MN 56258. (507) 532-6926.

PEZ FOR TRADE: Giraffe, Roar Lion, Gorilla, Duckie, Silly Clown A, Rooster, Gray Dumbo, Orange, Pink Easter Bunny, 1982 Gun, others. PEZ WANTED: Eerie Specters, UPC Monsters, others. Also have "Frenchy" mustard figural container and other character items to trade. Will trade anything for Marx playsets and figures. Thanks, Mike, for a fantastic hobby publication! Roland Austin, P.O. Box 2641; Stillwater, OK 74076.

Look! I am a new collector. I would like to buy some of your doubles of dispensers or stands or premiums or advertising. I love the PEZ guns! Please write me with your items for sale or trade. Thank you very much! Send to: John Devlin; 640 Aqua Ridge; St. Louis, MO 63129. P.S. I would love to hear from all the PEZ collectors; I still need many commons!

PEZ FOR SALE: Snow White (one blue collar, one yellow collar; both 1A) \$95 each; PEZ Pals: Girl 1A— \$8, Policeman 1A— \$20, Maharajah 1Y— \$22, Angel 1A— \$10, TOTEM Owl— \$15....will trade for Olive Oyl. David Welch; RR2 Box 233; Murphysboro, IL 62966. 618-687-2282.

PEZ for trade: 1982 space gun, small girl clicker and assorted

PEZ. Looking for Mickey Mouse die-cut, Zombi, Brutus, Olive Oyl, Snow White, Frankenstein, Batman with cape, Big clicker and small clown clicker. Ned and Jill Russell; 3103 Lincoln Avenue; Alameda, CA 94501. (415) 522-3037.

Wanted: Pineapple, Bride, Die-cut Easter Bunny, 1970's gun and anything interesting PEZ. Many PEZ available for trade. Call or write Barry Koester; 1124 Speer Drive; Modesto, CA 95351. (209) 521-6582.

Greetings: My name is Kato; I am the manservant for my boss, Mr. Britt Reid. I was busy vacuuming out the Black Beauty when I heard a crunching sound in the vacuum cleaner. I turned it off and looked inside (Curses to myself and ancestors). There, in with the dirt, was broken pieces of my boss's favorite PEZ dispenser. I need to replace it before my boss misses it or I will be disgraced! If you have a Green Hornet PEZ for sale, do not contact me directly as my boss monitors the mail and phones and I would be found out. Instead, please, I beg of you, contact my good friend John "the Cool PEZ Man" Devlin at 640 Aqua Ridge; St. Louis, MO 63129 and I will be forever in your gratitude. My ancestors and myself thank you! P.S. I hope this PEZ is not too expensive as Mr. Britt doesn't pay me much! Until we meet again, may the PEZ be with you!

Advertising Rates

Classified ads of 50 words or less are free to all subscribers, but they will not be carried over from issue to issue; you must submit a new ad for each issue.

Full-page display ads are available for ten dollars per page. Two-page ads are twenty dollars, etc. You may submit camera-ready ads or just send the information you want the ad to contain and we'll do all the layout work for you. Payment must accompany your ad.

Deadline for both classified and display ads for the next issue is May 31.

Send ad copy to Mike Robertson; P.O. Box 606; Dripping Springs, Texas 78620. Or, phone in your classified ad at (512) 858-7720. Ads may be used to buy, sell, trade, send messages, or act as a bulletin board. It's your free forum; use it!



To subscribe or to send a gift subscription to someone else, just fill out the form below (or a photocopy).

I enclose \$15.00 for a one year subscription to The Optimistic PEZZIMIST.

name _____

address _____

city/state/zip _____

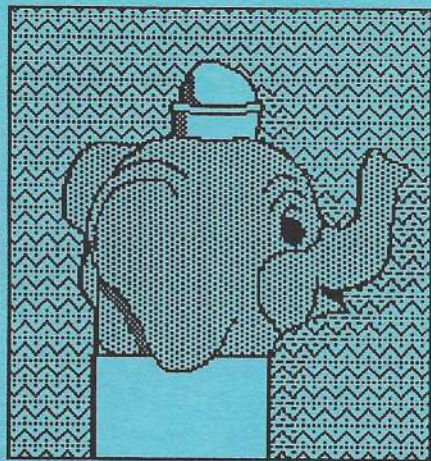
send to:

**Mike Robertson
P.O.Box 606
Dripping Springs, TX 78620**

**PEZ Gallery
Collector Card**

Dumbo

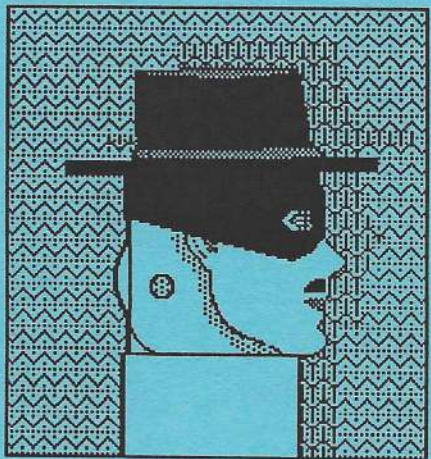
Dumbo is found two ways: blue head with yellow cap or gray head with red cap. The trunk/mouth is separate piece.



**PEZ Gallery
Collector Card**

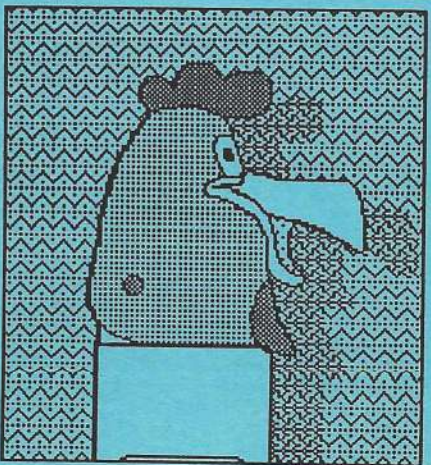
Zorro

Only two pieces, the basic human head and the black hat/mask. The moustache is painted on.



**PEZ Gallery
Collector Card**

Foghorn Leghorn
Warner Bros. rooster has greenish-tan head, yellow beak, and red comb. Eyes and wattle are painted.



Coming
in Future Issues of
the
Optimistic
PEZZIMIST:

The Ultra-Rare: a pictorial reference
to the scarcest PEZ of all!

A look at PEZ Premiums and Promo-
tional items.

How to display your collection.

Finding PEZ: the experts tell you
how!

More news, collector profiles, auc-
tions, freebies, articles, artwork,
and the official O.P. T-shirt!